

Moving the Line
Dance Aware

4 - 25 October 2008

Dance Aware Moving the Line
4 - 25 October 2008

www.holtonlee.co.uk/arts

Email: arts@holtonlee.co.uk
Tel: 01202 625562

East Holton Charity
Holton Heath
Poole
Dorset
BH16 6JN



Published by Holton Lee 2008
Registered as East Holton Charity No. 1011867



Body N Soul

Photography - Paul Marks
Concept - Michael Mitchell

The Gallery at Faith House, Holton Lee, Dorset

Moving the line

Dance Aware

Dance Aware aims to foster an enquiry into the origins of movement, when, where and how does movement arise? Specifically, how is movement shaped by life experience, beliefs and everyday interaction with the world?

Dance Aware is one of the few UK dance companies with a disabled director. Michael Mitchell facilitates and choreographs from a wheelchair. Performances use simple everyday actions juxtaposed with recurring themes drawn from life, loving, dying, uniting, and rejection. Always they make a social comment reflecting the views and opinions of the dancers.



Michael says, "I like to give people an opportunity to find their own movement style and to move in an authentic way. I see dance as a skill and a language."

Disability Arts Open Competitive Exhibition 09

Holton Lee invites disabled artists to submit work that reflects / relates to Disability Arts.

Exhibition in the Gallery at Faith House

17 Jan – 8 March 09

Two prizes up to the value of £1,000

Deadline for entry 1st December 08

For more information / application form please contact
Holton Lee or visit our website

“Life is like photography. You use the negatives to develop”

Anonymous.

Photography has enabled me to engage with the world in many different ways, the process forcing an emotional response which somehow tells me when to click the shutter.

Whilst documenting the “Moving the Line showcase” I was witness to an amazing collaborative effort between the mix of disabled and non-disabled people brought together in the true spirit of cooperation.

It was a truly enlightening and satisfying experience in which I also found myself performing a kind of dance in the darkness backstage, in order to capture the fleeting moments onstage.

I aim to fully absorb myself in what I see before me, and build a picture or pictures that, when put together, convey the essence of the whole story.

Paul Marks Oct 08



Artistic director Michael Mitchell has a wide range of experience as a cross regional artist with Gloucester Dance, Swindon Dance, arts centres and theatres throughout the South West. He has worked extensively with a wide range of abilities, old and young - notably, RNIB, Mencap, artists Signdance Collective, Velcro, Via, Salto and older people with Somerset Social Service.

He hates the labels and just enjoys working with humans of all shapes, sizes, ages and believes in the power of movement to transform.

Michael has worked extensively in the UK and has a full programme of projects for the Autumn/Winter and into 2009.



Recent Dance Aware projects include:

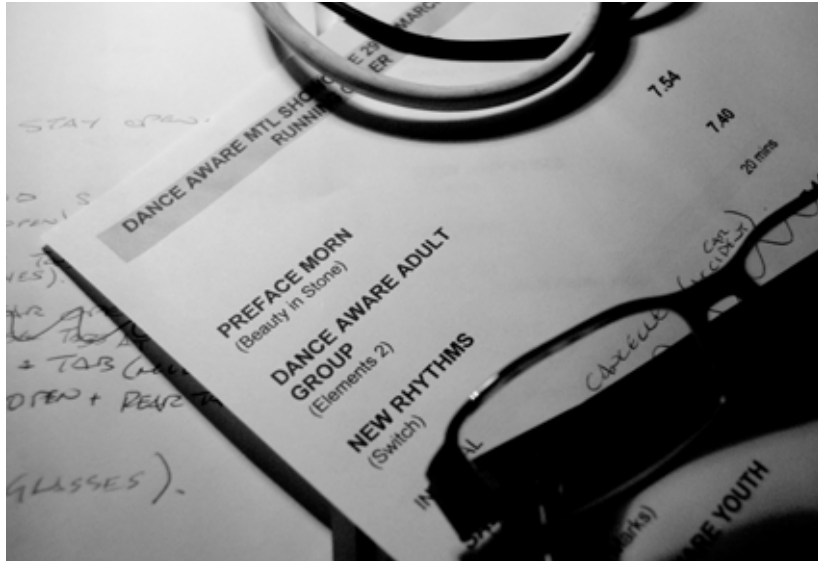
2006 Icons for Life and The Pyramid Project at Salisbury Arts Centre.

2007 Moving the Line cross regional project.

2008 A regional integrated dance showcase hosted by Institute of Contemporary Interdisciplinary Arts at University of Bath.

Dance Aware is currently engaged in a multimedia project using percussion, live music and dance Rhythm and Life at Salisbury Arts Centre.

Laying Down the Line for Performance Documentation



Moving the Line is the first exhibition to be shown in Faith House which deals solely with the documentation of performance.

In developing the National Disability Arts Collection and Archive (NDACA), it is our responsibility to highlight the values of ensuring historical records are kept for the future. One of the most vulnerable art forms in this case is performance. Because a performance is time based, art that exists in the present, there for an instant and then gone again, the inclusion of a documentation process is imperative for the future understanding of this artistic medium. This process can be either unobtrusive or become part of the actual performance.



Evolution



Back Stage Gossip



Bodies in Space



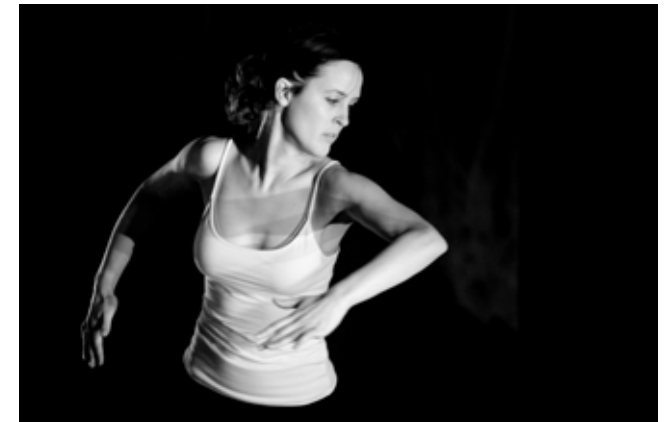
Stretch

It is not for nostalgia that we must document so rigorously, unlike that of a family photograph which gets archived in the album or digital equivalent for an occasional look to aid the memory. Performance documentation allows the event to be placed within history for future generations to understand the development of the artform and its relevance to external social and cultural critical contexts. For Disability Arts, which has largely been omitted from mainstream art history since it began in the 1980's, it is vital to understanding the movement and its setting within disability culture. The photographs and accompanying DVD from the *Moving the Line* showcase in Bath, are exemplary of the quality of documentation needed to create a useful resource for the future.

For *Moving the Line*, the photographic documentation displayed in a gallery setting, becomes the artwork, a new lease of life is given to the once time-limited medium of the performance. It is so important that documentation, be it drawing, writing, poetry, sound recording or the more conventional film and photography, as shown here in *Moving the Line*, is symptomatic of the spirit and atmosphere of the original performance. The striking black and white photography of Paul Marks captures the essence of the performance beautifully.

With this in mind,
I am sure that
Moving the Line
will be a key archive
resource for the
future.

Trish Wheatley
Curator





Velcro



Velcro



Evocation



Velcro. Tenderness



Silhouette. Angela



Show Business. Dance Aware



Ergun. Absorbed



New Rhythms Extended



New Rhythms, Interlinked



Movement & Machine



Movement Controlled



Astral / Out Of Body / Transcendence



Dance Aware. Elements to Rehearsal



Co-Dependence



Leap of Faith



Dance Aware. Elements to Rehearsal



Duet In The Dark



Full Front Stage



Lights, Camera, Action



Ergun Sets the Stage



Ritual. Dance Aware



Detailed Enquiry



Edge Of Unknown



Personal Viewpoint



Satisfaction